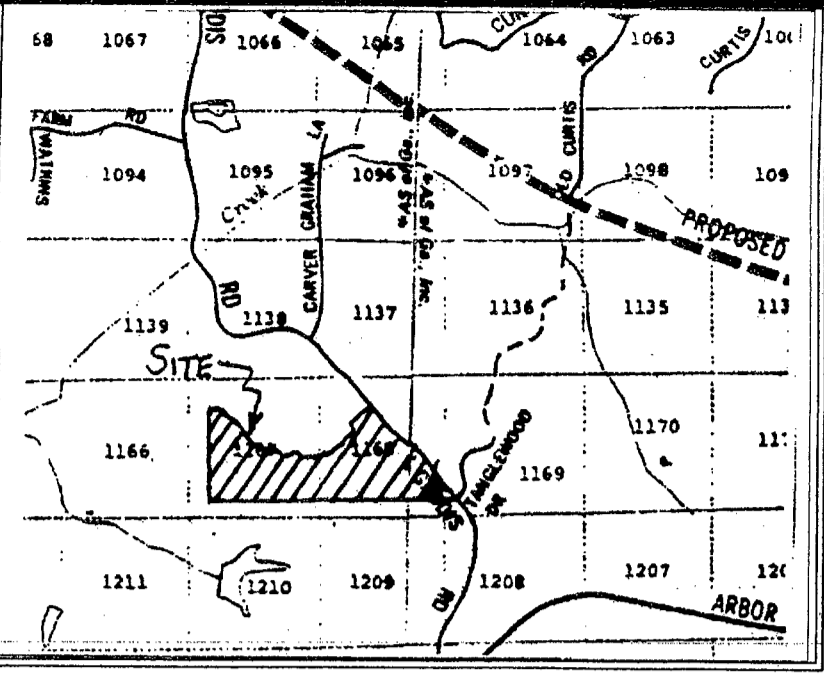


NOTE:
BEARINGS
ARE BASED
ON THE
"GEORGIA
COORDINATE
SYSTEM OF
1985 -
WEST ZONE."



REVISION NOTE NO. 1 DATED: 2/11/04
THIS PLAT SET SUPERSEDES THE PLAT SET
RECORDED IN PLAT BOOK 64 ON PAGES 151-154.
THE PURPOSE OF THE REVISION IS TO: REVISE
THE LOT LINES BETWEEN LOTS 25 AND 26 AND
BETWEEN LOTS 42 AND 41 AND TO REMOVE THE
50' BUFFER ALONG THE WESTERN BOUNDARY (PER
VARIANCE CASE #03-12-062A).
Vicki A. Taylor 04.08.04
APPROVED BY

- LEGEND
- AC - ACRES
 - BC - BACK OF CURB
 - BL - BUILDING SETBACK LINE
 - BWF - BARBED WIRE FENCE
 - C&G - CURB & GUTTER
 - CT - CRIMP TOP PIPE
 - C - CENTER LINE
 - CLF - CHAIN LINK FENCE
 - CMP - CORRUGATED METAL PIPE
 - CNS - CONCRETE NAIL SET
 - DB,PG - DEED BOOK, PAGE
 - DE - DRAINAGE EASEMENT
 - DI - DROP INLET
 - DIP - DUCTILE IRON PIPE
 - DWCB - DOUBLE-WING CATCH BASIN
 - EP - EDGE OF PAVEMENT
 - FH - FIRE HYDRANT
 - G - GAS LINE
 - GP - GUY POLE
 - GV - GAS VALVE
 - GW - GUY WIRE
 - HC - HANDICAP PARKING SPACE
 - HW - HEADWALL
 - HWF - HOG WIRE FENCE
 - IE - INVERT ELEVATION
 - IPF - IRON PIN FOUND
 - IPS - IRON PIN SET (1/2" RB)
 - JB - JUNCTION BOX
 - LL - LAND LOT
 - LLL - LAND LOT LINE
 - LP - LIGHT POLE
 - MH - MANHOLE
 - MON - MONUMENT
 - MSL - MEAN SEA LEVEL
 - N/F - NOW OR FORMERLY
 - OT - OPEN TOP PIPE
 - P - POWER LINE
 - P/T - POWER & TELEPHONE LINE
 - PBX - POWER BOX
 - P - PROPERTY LINE
 - PM - POWER METER
 - POB - POINT OF BEGINNING
 - PP - POWER POLE
 - P/P - POWER & TELEPHONE POLE
 - PVC - POLYVINYL CHLORIDE PIPE
 - RB - REINFORCING IRON BAR
 - RCP - REINFORCED CONCRETE PIPE
 - R/W - RIGHT OF WAY
 - SF - SQUARE FEET
 - SPV - SPRINKLER VALVE
 - SS - SANITARY SEWER LINE
 - SSE - SANITARY SEWER EASEMENT
 - SW - SIDEWALK
 - SWCB - SINGLE-WING CATCH BASIN
 - TBM - TEMPORARY BENCHMARK
 - TBX - TELEPHONE BOX
 - TP - TELEPHONE POLE
 - T - TELEPHONE LINE
 - UGP - UNDERGROUND POWER
 - UGT - UNDERGROUND TELEPHONE
 - VCP - VITRIFIED CLAY PIPE
 - WF - WOOD FENCE
 - WI - WEIR INLET
 - W - WATER LINE
 - WM - WATER METER
 - WV - WATER VALVE

**WOODMONT
PHASE 1B**
ZONED: PUD
PLAT BOOK 57, PAGE 204

RAVENWOOD WAY
(50' R/W)

N/F
JOHNSON
DB 37, PG 141
TAX PARCEL 03N12-130
ZONED: AG

N/F
WILSON
DB 46, PG 422
TAX PARCEL 03N12-129
ZONED: AG

N/F
KAHN
DB 354, PG 320
TAX PARCEL 03N12-142
ZONED: AG

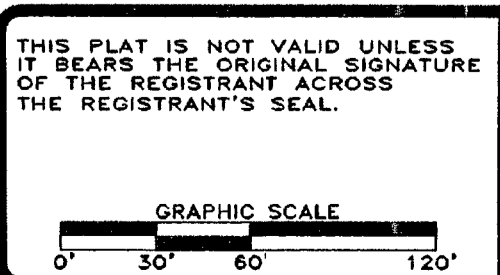
GA. CHEROKEE COUNTY
PLAT FILED FOR RECORD
4/13/04 AT 4:09 PM
RECORD IN PLAT
BOOK 57, PAGE 111
ANNE M. RENEAU
CLERK SUPERIOR COURT



THIS PLAT IS FOR THE EXCLUSIVE USE OF
JOHN WIELAND HOMES & NEIGHBORHOODS, INC.
ANY USE BY THIRD PARTIES IS AT THEIR OWN RISK.

JOB NO. G197112.051.00-1725

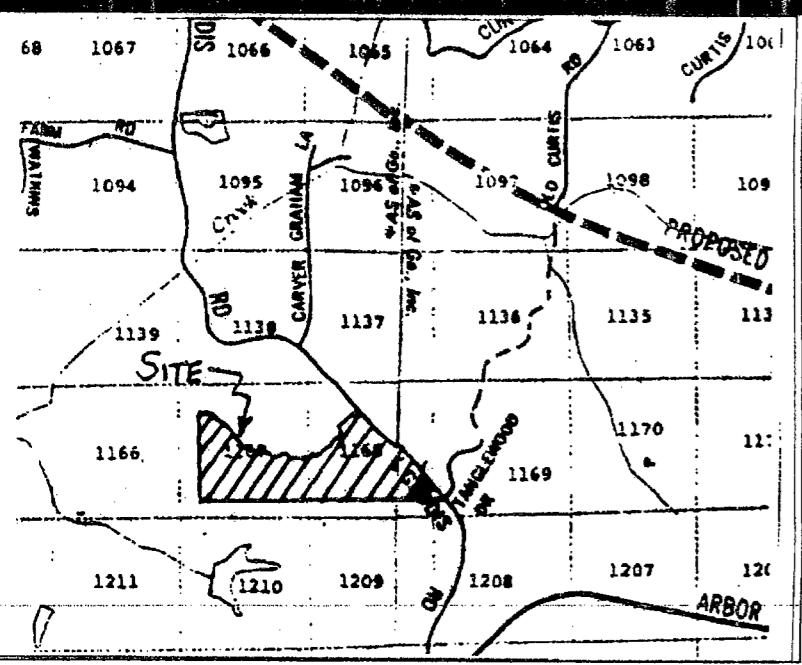
SHEET	2	OF	4
DATE	10/24/00		
SCALE	1" = 60'		
DRAWN BY	PK		
FILE NO.	S-2974.DWG		



NO.	DATE	DESCRIPTION
1	2/11/04	SEE REVISION NOTE 1, SHEET 2

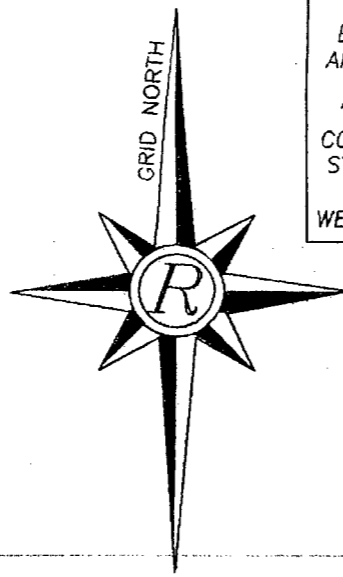
FINAL SUBDIVISION PLAT FOR
**WOODMONT
UNIT 6**
LOCATED IN
LAND LOTS 1137, 1138, 1167 & 1168, 3rd DISTRICT, 2nd SECTION
CHEROKEE COUNTY, GEORGIA

rochester
rochester & associates, inc.
atlanta (770)718-0600 • gainesville (770)534-5106
blairsville (706)745-5106
425 oak st., n.w. gainesville, ga. 30501



LOCATION MAP - 1"=2000'

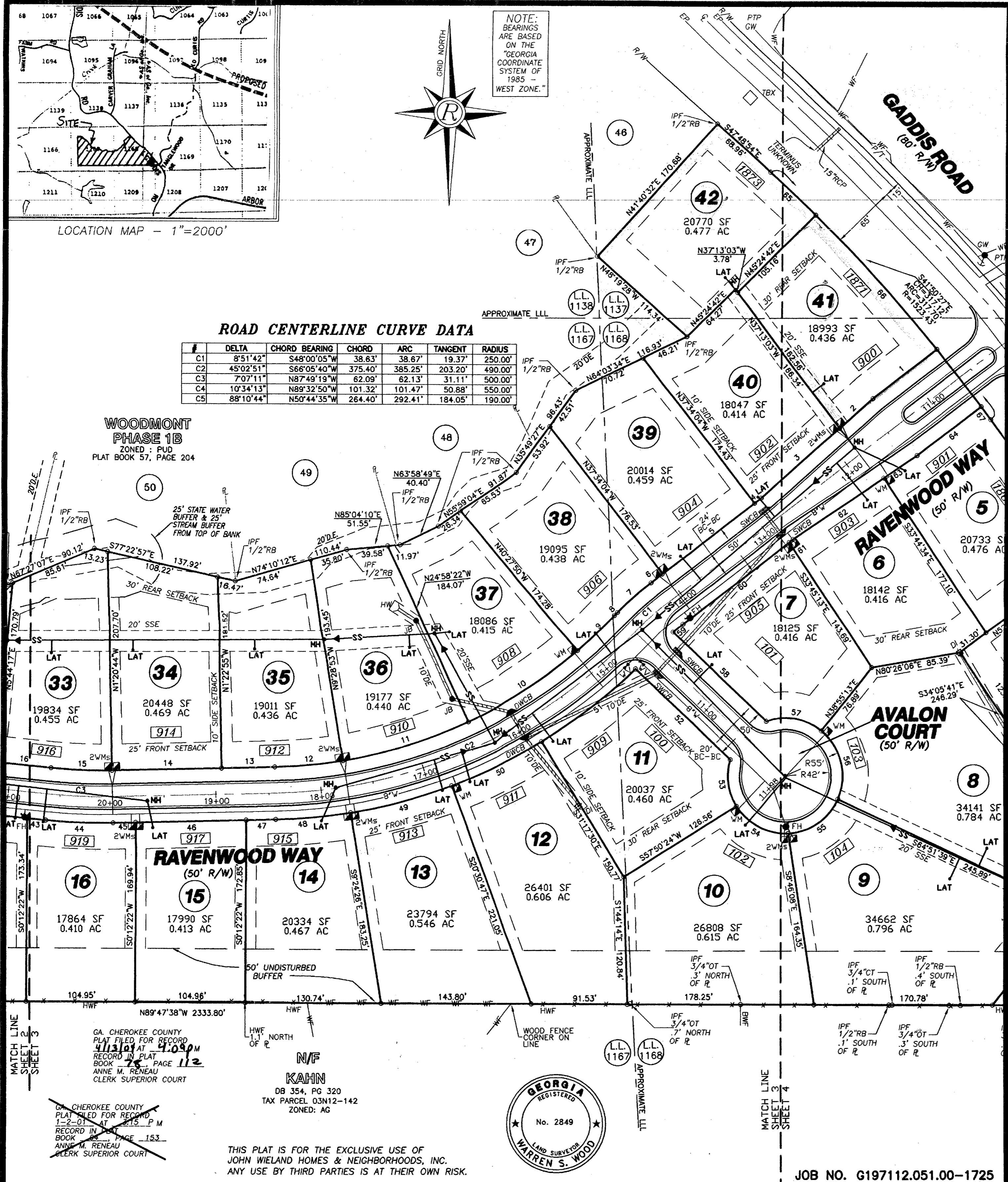
NOTE:
BEARINGS
ARE BASED
ON THE
"GEORGIA
COORDINATE
SYSTEM OF
1985 -
WEST ZONE."



ROAD CENTERLINE CURVE DATA

#	DELTA	CHORD BEARING	CHORD	ARC	TANGENT	RADIUS
C1	8°51'42"	S48°00'05"W	38.63'	38.67'	19.37'	250.00'
C2	45°02'51"	S66°05'40"W	375.40'	385.25'	203.20'	490.00'
C3	7°07'11"	N87°49'19"W	62.09'	62.13'	31.11'	500.00'
C4	10°34'13"	N89°32'50"W	101.32'	101.47'	50.88'	550.00'
C5	88°10'44"	N50°44'35"W	264.40'	292.41'	184.05'	190.00'

WOODMONT
PHASE 1B
ZONED: PUD
PLAT BOOK 57, PAGE 204



GA. CHEROKEE COUNTY
PLAT FILED FOR RECORD
4113101 AT 4:09 PM
RECORD IN PLAT
BOOK 57 PAGE 112
ANNE M. RENEAU
CLERK SUPERIOR COURT

N/F
KAHN
DB 354, PG 320
TAX PARCEL 03N12-142
ZONED: AG



THIS PLAT IS FOR THE EXCLUSIVE USE OF
JOHN WIELAND HOMES & NEIGHBORHOODS, INC.
ANY USE BY THIRD PARTIES IS AT THEIR OWN RISK.

JOB NO. G197112.051.00-1725

SHEET 3 OF 4
DATE 10/24/00
SCALE 1"=60'
DRAWN BY PK
FILE NO. S-2974.DWG

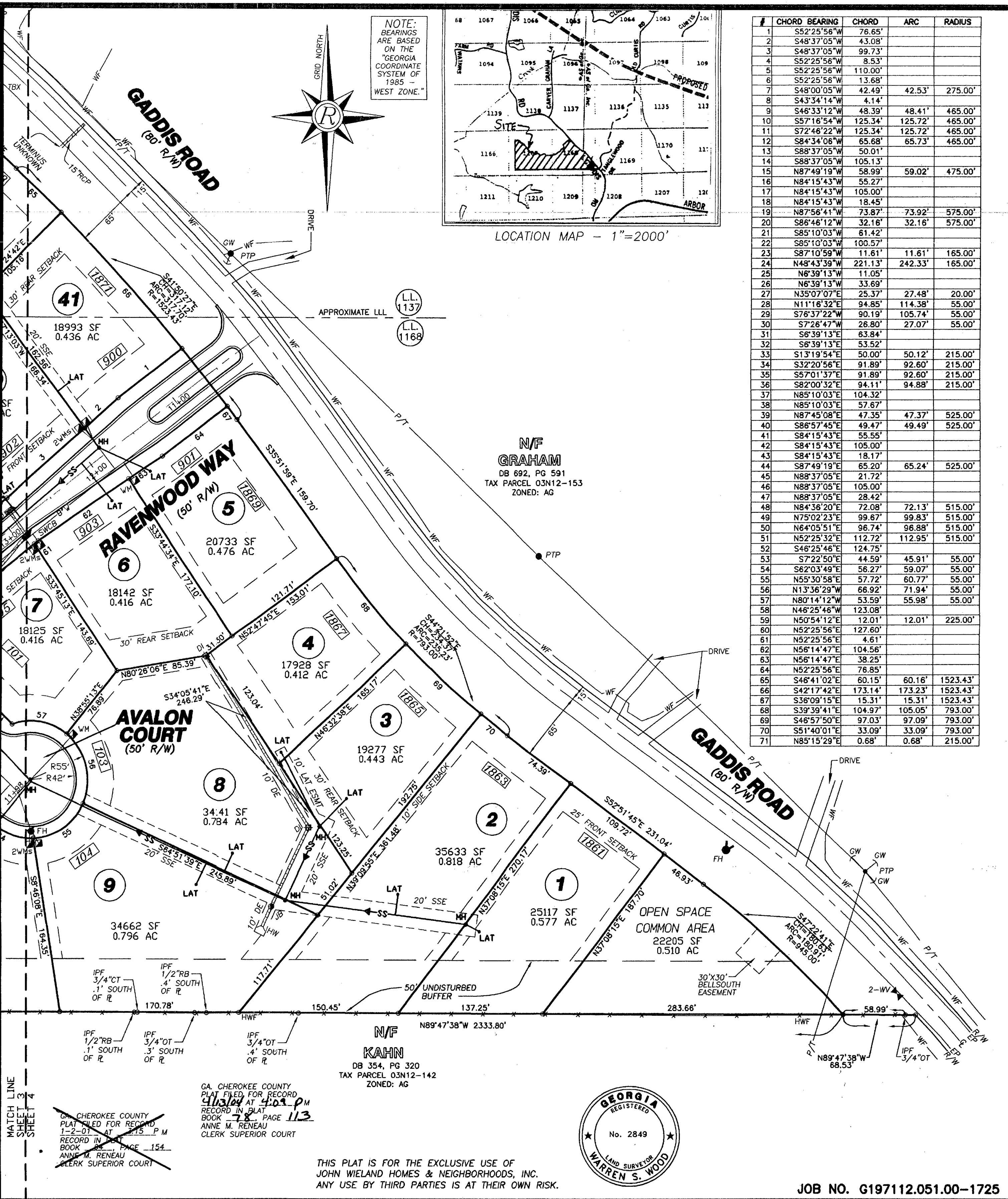
THIS PLAT IS NOT VALID UNLESS
IT BEARS THE ORIGINAL SIGNATURE
OF THE REGISTRANT ACROSS
THE REGISTRANT'S SEAL.

GRAPHIC SCALE
0' 30' 60' 120'

NO.	DATE	DESCRIPTION
1	2/11/04	SEE REVISION NOTE 1, SHEET 2
REVISIONS		

FINAL SUBDIVISION PLAT FOR
**WOODMONT
UNIT 6**
LOCATED IN
LAND LOTS 1137, 1138, 1167 & 1168, 3rd DISTRICT, 2nd SECTION
CHEROKEE COUNTY, GEORGIA

rochester
rochester & associates, inc.
atlanta (770)718-0600 • gainesville (770)534-5106
blairsville (706)745-5106
425 oak st., n.w. gainesville, ga. 30501



SHEET 4 OF 4
DATE 10/24/00
SCALE 1" = 60'
DRAWN BY PK
FILE NO. S-2974.DWG

THIS PLAT IS NOT VALID UNLESS IT BEARS THE ORIGINAL SIGNATURE OF THE REGISTRANT ACROSS THE REGISTRANT'S SEAL.

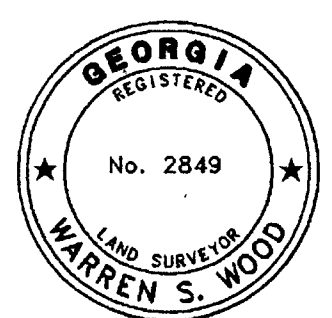
GRAPHIC SCALE
0' 30' 60' 120'

NO.	DATE	DESCRIPTION
1	2/11/04	SEE REVISION NOTE 1, SHEET 2
REVISIONS		

FINAL SUBDIVISION PLAT FOR
WOODMONT UNIT 6
LOCATED IN
LAND LOTS 1137, 1138, 1167 & 1168, 3rd DISTRICT, 2nd SECTION
CHEROKEE COUNTY, GEORGIA

rochester
rochester & associates, inc.
atlanta (770)718-0600 - gainesville (770)534-5106
blairsville (706)745-5106
425 oak st., n.w. gainesville, ga. 30501

JOB NO. G197112.051.00-1725



THIS PLAT IS FOR THE EXCLUSIVE USE OF
JOHN WIELAND HOMES & NEIGHBORHOODS, INC.
ANY USE BY THIRD PARTIES IS AT THEIR OWN RISK.

GA. CHEROKEE COUNTY
PLAT FILED FOR RECORD
4/13/04 AT 4:03 PM
RECORD IN PLAT
BOOK 22 PAGE 113
ANNE M. RENEAU
CLERK SUPERIOR COURT

CHEROKEE COUNTY
PLAT FILED FOR RECORD
1-2-01 AT 2:15 PM
RECORD IN PLAT
BOOK 85 PAGE 154
ANNE M. RENEAU
CLERK SUPERIOR COURT