

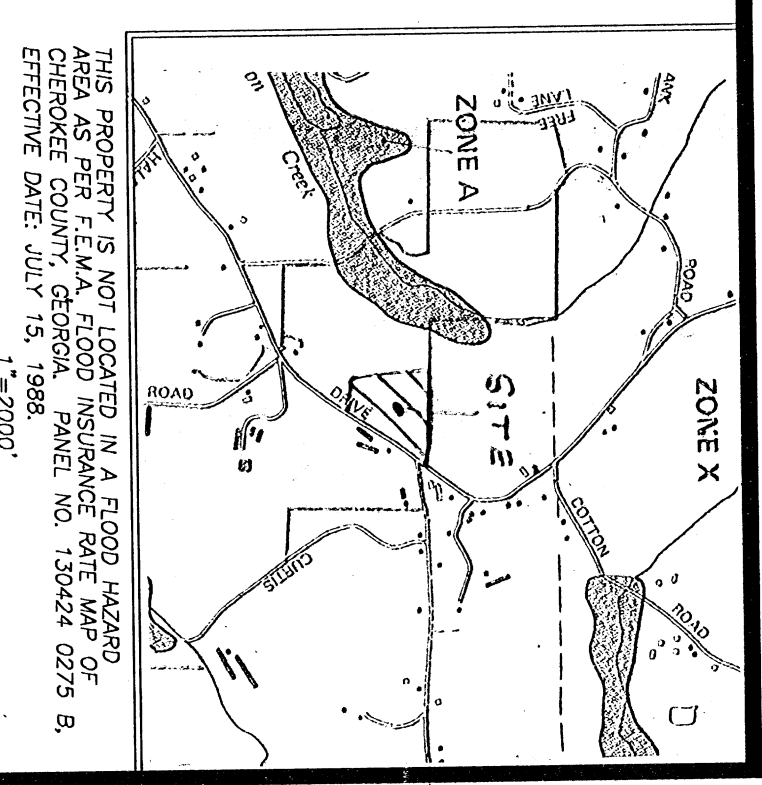
LOCATION MAP - 1"=2000'

AREA SUMMARY
 TOTAL LOT AREA = 10.661 AC
 ROAD AREA = 1.759 AC
 TOTAL AREA = 12.420 AC

FINAL SUBDIVISION PLAT FOR

WOODMONT
 UNIT 9D

LAND LOTS 994 & 995 3rd DISTRICT, 2nd SECTION
 CHEROKEE COUNTY, GEORGIA



THIS PROPERTY IS NOT LOCATED IN A FLOOD HAZARD ZONE AS SHOWN ON THE FLOOD MAP OF CHEROKEE COUNTY, GEORGIA, PANEL NO. 130424 0275 B, EFFECTIVE DATE: JULY 15, 1988. 1"=2000'

REVISION NO. 2, DATE: 10-25-02
 THIS PLAT SUPERSEDES THE PLAT RECORDED IN PLAT BOOK 68, PAGE 133.
 THE PURPOSE OF THIS REVISION IS TO REVISE THE PLAT TO REFLECT THE CORRECTIONS TO THE PUBLIC PROPERTY ALL STREETS, SEWER COLLECTORS, AND TRANSMISSION SHOW AND TRANSMISSION OWNERSHIP AND ALL PUBLIC AREAS IN THE SINGLE BY DEED, FOR THE PURPOSE THEREIN EXPRESSED.
 DATE: 10/25/02
 APPROVED BY: [Signature]

PLAT FILED FOR RECORD AT 10:20 A.M. RECORDED IN PLAT BOOK 75, PAGE 4. ANNE M. REBEAU, CLERK SUPERIOR COURT.

OWNER/DEVELOPER
JOHN WELAND HOMES & NEIGHBORHOODS, INC.
 1950 SULLIVAN ROAD
 ATLANTA, GEORGIA 30337
 (770)996-1400

ENGINEER/SURVEYOR
ROCHESTER & ASSOCIATES, INC.
 ROCHESTER, N.W., GAINESVILLE, GEORGIA 30501
 SURVEYOR: WARREN S. WOOD
 ENGINEER: STEVEN D. SPACE

OWNERS CERTIFICATION AND DEDICATION.
 THE OWNER OF THE LAND SHOWN ON THIS PLAT AND WHOSE NAME IS SUBSCRIBED HERETO, HAS THROUGH A DULY AUTHORIZED AGENT, ACKNOWLEDGES THAT THIS PLAT WAS MADE FROM AN ACTUAL SURVEY AND DEDICATES BY THIS DECLARATION TO THE USE OF THE PUBLIC PROPERTY ALL STREETS, SEWER COLLECTORS, AND TRANSMISSION SHOW AND TRANSMISSION OWNERSHIP AND ALL PUBLIC AREAS IN THE SINGLE BY DEED, FOR THE PURPOSE THEREIN EXPRESSED.

COUNTY ENGINEER'S CERTIFICATE
 THIS IS TO CERTIFY THAT THIS PLAT HAS BEEN REVIEWED AND APPROVED AS TO CONFORMANCE WITH THE DEVELOPMENT REGULATIONS OF CHEROKEE COUNTY, GEORGIA.
 DATE: 10-4-00
 COUNTY ENGINEER: [Signature]

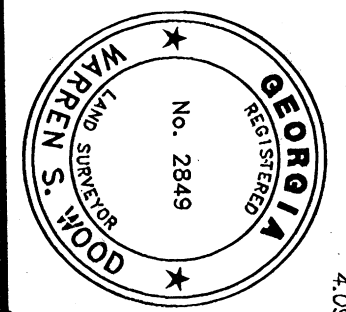
REVISION NO. 1, DATE: 2/2/01
 THIS PLAT SUPERSEDES THE PLAT RECORDED IN PLAT BOOK 121, PAGE 23.
 THE PURPOSE OF THIS REVISION IS TO CHANGE THE LOT LINE BETWEEN LOTS 622 & 623.
 APPROVED BY: [Signature]
 DATE: 1/2/02

CHEROKEE COUNTY WATER AND SEWER AUTHORITY CERTIFICATE
 PURSUANT TO ALL REQUIREMENTS OF THE CHEROKEE COUNTY WATER DEPARTMENT HAVING BEEN FULFILLED, THIS PLAT IS APPROVED FOR RECORDING.
 DATE: 9-28-00
 CHEROKEE COUNTY WATER DEPARTMENT: [Signature]

CHEROKEE COUNTY MUNICIPAL COMMISSION CERTIFICATE
 PURSUANT TO THE LAND SUBDIVISION RESOLUTION OF CHEROKEE COUNTY, GEORGIA, ALL THE REQUIREMENTS OF APPROVAL HAVING BEEN FULFILLED, THIS PLAT IS APPROVED AS TO CONFORMANCE WITH THE PREVENTION OF PLANNING COMMISSIONS OR FINAL APPROVAL 2000.
 DATE: 10/19/00
 SECRETARY, CHEROKEE COUNTY MUNICIPAL PLANNING COMMISSION: [Signature]

CHEROKEE COUNTY FIRE MARSHAL'S CERTIFICATE
 THIS IS TO CERTIFY THAT THIS PLAT HAS BEEN REVIEWED AND APPROVED AS TO CONFORMANCE WITH THE STANDARD AND AS TO CONFORMANCE WITH THE STANDARD AS TO CHEROKEE COUNTY FIRE PREVENTION CODE AND CHEROKEE COUNTY FIRE PREVENTION CODE AND MONUMENTS HAVE BEEN PLACED OR FOUND AS SHOWN.
 DATE: 10/19/00
 FIRE MARSHAL: [Signature]

SURVEYOR'S ACKNOWLEDGMENT.
 I HEREBY CERTIFY THAT THE PLAN SHOWN AND DESCRIBED HEREON IS TRUE, CORRECT, TO THE ACCURACY AND PRECISION AS STATED THEREON, AND WAS PREPARED FROM A SURVEY MADE ON THE GROUND UNDER MY SUPERVISION AND THAT THE MONUMENTS HAVE BEEN PLACED OR FOUND AS SHOWN.
 DATE: 9/25/00
 WARREN S. WOOD, GEORGIA REGISTERED LAND SURVEYOR 2849



THIS PLAT IS FOR THE EXCLUSIVE USE OF JOHN WELAND HOMES & NEIGHBORHOODS, INC. ANY USE BY THIRD PARTIES IS AT THEIR OWN RISK.
 JOB NO. G197112.09A.00-1725

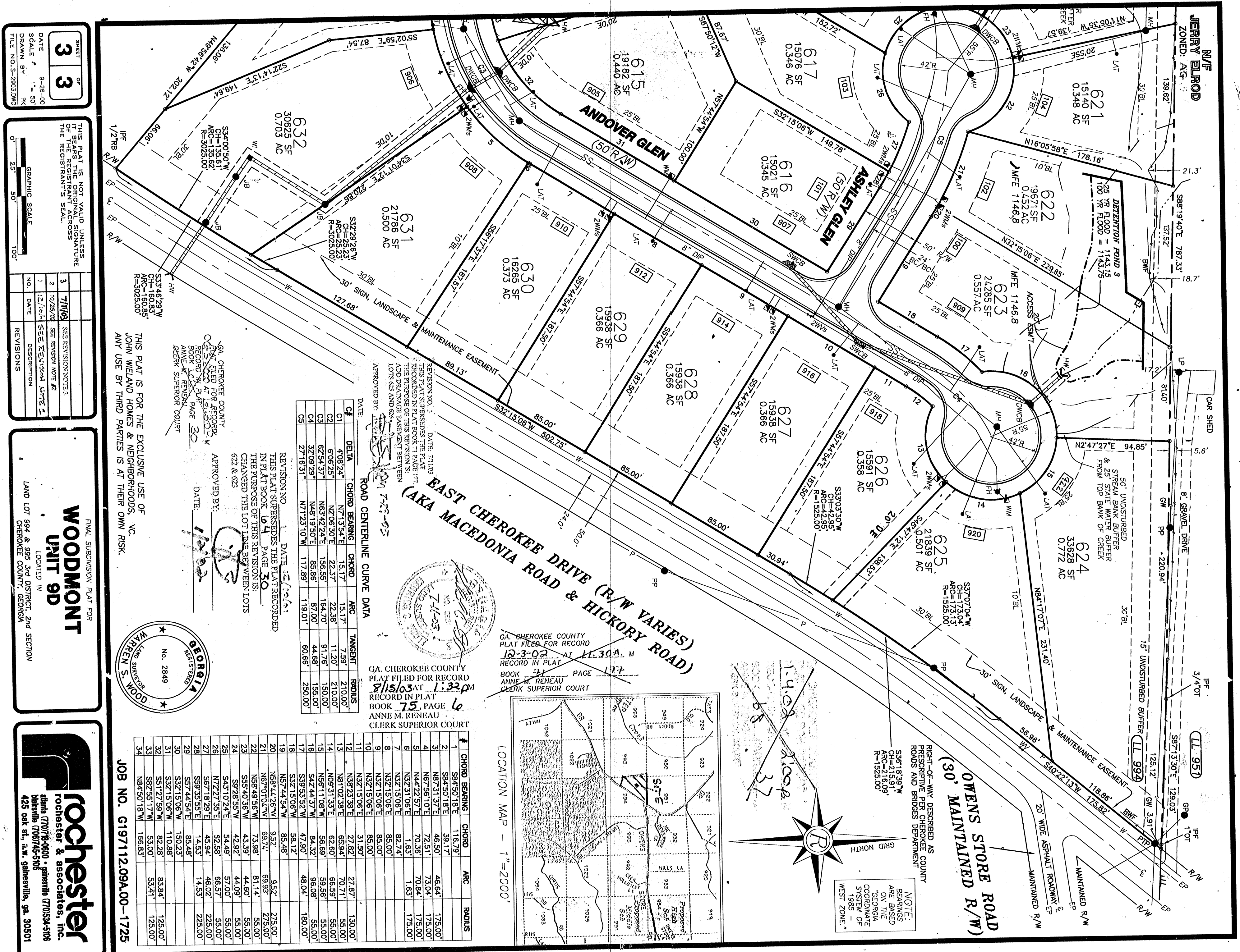
SHEET 1 OF 3
 DATE: 9-28-00
 DRAWN BY: PK
 FILE NO.: S-2833JMS

THIS PLAT IS NOT VALID UNLESS IT BEARS THE ORIGINAL SIGNATURE OF THE REGISTRANT'S SEAL.

NO.	DATE	DESCRIPTION	REVISIONS
1	12/27/00	SEE REVISION NOTE 1	
2	1/22/02	SEE REVISION NOTE 2	
3	7/14/01	SEE REVISION NOTE 3	

FINAL SUBDIVISION PLAT FOR
WOODMONT
 UNIT 9D
 LOCATED IN
 LAND LOT 994 & 995 3rd DISTRICT, 2nd SECTION
 CHEROKEE COUNTY, GEORGIA

rochester
 rochester & associates, inc.
 Atlanta (770)78-0600 • Asheville (703)54-4106
 Marietta (760)74-5106
 425 oak st., n.w., gainesville, ga. 30501



GA. SHEROKEE COUNTY
 PLAT FILED FOR RECORD
 12-3-02 AT 11:30 A.M.
 RECORD IN PLAT
 BOOK 25, PAGE 6
 ANNE M. RENEAU
 CLERK SUPERIOR COURT

REVISION NO. 3 DATE 7-25-02

REVISION NO. 1 DATE 12-1-01

REVISION NO. 2 DATE 11-13-01

REVISION NO. 4 DATE 11-13-01

REVISION NO. 5 DATE 11-13-01

REVISION NO. 6 DATE 11-13-01

REVISION NO. 7 DATE 11-13-01

REVISION NO. 8 DATE 11-13-01

REVISION NO. 9 DATE 11-13-01

REVISION NO. 10 DATE 11-13-01

REVISION NO. 11 DATE 11-13-01

REVISION NO. 12 DATE 11-13-01

REVISION NO. 13 DATE 11-13-01

REVISION NO. 14 DATE 11-13-01

REVISION NO. 15 DATE 11-13-01

REVISION NO. 16 DATE 11-13-01

REVISION NO. 17 DATE 11-13-01

REVISION NO. 18 DATE 11-13-01

REVISION NO. 19 DATE 11-13-01

REVISION NO. 20 DATE 11-13-01

REVISION NO. 21 DATE 11-13-01

REVISION NO. 22 DATE 11-13-01

REVISION NO. 23 DATE 11-13-01

REVISION NO. 24 DATE 11-13-01

REVISION NO. 25 DATE 11-13-01

REVISION NO. 26 DATE 11-13-01

REVISION NO. 27 DATE 11-13-01

REVISION NO. 28 DATE 11-13-01

REVISION NO. 29 DATE 11-13-01

REVISION NO. 30 DATE 11-13-01

REVISION NO. 31 DATE 11-13-01

REVISION NO. 32 DATE 11-13-01

REVISION NO. 33 DATE 11-13-01

REVISION NO. 34 DATE 11-13-01

ROAD CENTRELINE CURVE DATA

CHORD BEARING	CHORD	ARC	TANGENT	RADIUS	
C1	4°08'24"	N71°34'E	15.17'	53.7'	210.0'
C2	6°06'25"	N70°06'30"E	22.38'	73.9'	210.0'
C3	6°25'34"	N63°42'24"E	145.85'	164.70'	91.76'
C4	32°09'29"	N48°19'50"E	85.88'	87.00'	44.88'
C5	32°09'29"	N48°19'50"E	117.89'	119.01'	60.56'
C6	27°16'51"	N71°23'10"W	117.89'	119.01'	60.56'

CHORD BEARING CHORD ARC RADIUS

1	S84°50'18"E	116.79'	27.97'	116.00'
2	S84°50'18"E	39.17'	39.17'	175.00'
3	N87°31'37"E	46.50'	46.64'	175.00'
4	N67°58'10"E	72.51'	73.04'	175.00'
5	N44°22'57"E	70.36'	70.84'	175.00'
6	N32°31'08"E	1.32'	1.63'	175.00'
7	N32°31'08"E	82.74'	82.74'	175.00'
8	N32°31'08"E	85.00'	85.00'	175.00'
9	N32°31'08"E	85.00'	85.00'	175.00'
10	N32°31'08"E	85.00'	85.00'	175.00'
11	N32°31'08"E	31.59'	27.97'	116.00'
12	N32°31'08"E	27.97'	27.97'	116.00'
13	N81°02'38"E	65.94'	70.74'	150.00'
14	N09°31'33"E	62.60'	65.52'	150.00'
15	N57°11'08"W	58.59'	58.08'	150.00'
16	S27°44'54"E	48.20'	48.04'	150.00'
17	S27°44'54"E	58.47'	58.47'	150.00'
18	N34°14'28"W	85.48'	85.48'	175.00'
19	N34°14'28"W	93.57'	93.57'	175.00'
20	N67°01'02"W	69.74'	69.82'	225.00'
21	N67°01'02"W	73.38'	81.14'	225.00'
22	S55°40'36"W	43.39'	44.60'	55.00'
23	S55°40'36"W	42.92'	44.09'	55.00'
24	S55°40'36"W	54.49'	57.00'	55.00'
25	S45°10'24"E	52.58'	56.57'	55.00'
26	N72°27'35"E	45.94'	46.02'	225.00'
27	S67°18'29"E	45.94'	46.02'	225.00'
28	S59°35'55"E	14.53'	14.53'	225.00'
29	S57°44'54"E	85.48'	85.48'	175.00'
30	S57°44'54"E	150.23'	150.23'	175.00'
31	S37°15'06"W	110.88'	83.84'	125.00'
32	S51°27'59"W	82.28'	53.47'	125.00'
33	S67°55'17"W	53.00'	53.47'	125.00'
34	N64°50'18"W	156.83'		

SHEET 3 OF 3
 DATE 9-26-00
 SCALE 1" = 50'
 DRAWN BY J.K.
 FILE NO. S-26032M

THIS PLAT IS NOT VALID UNLESS THE REGISTRANT'S SEAL IS PRESENT AT THE TIME OF RECORDATION.

NO.	DATE	DESCRIPTION	REVISIONS
1	12/1/01	SEE REVISION #1	
2	02/27/02	SEE REVISION #2	
3	7/11/02	SEE REVISION #3	

FINAL SUBDIVISION PLAT FOR
WOODMONT UNIT 9D
 LOCATED IN
 LAND LOT 994 & 995 3rd DISTRICT, 2nd SECTION
 CHEROKEE COUNTY, GEORGIA

rochester
 rochester & associates, inc.
 Phone (770) 786-4600 • Atlanta (770) 534-5106
 Mobile (770) 745-5106
 425 Oak St., N.W. Gainesville, GA 30501

JOB NO. G197112.094.00-1725